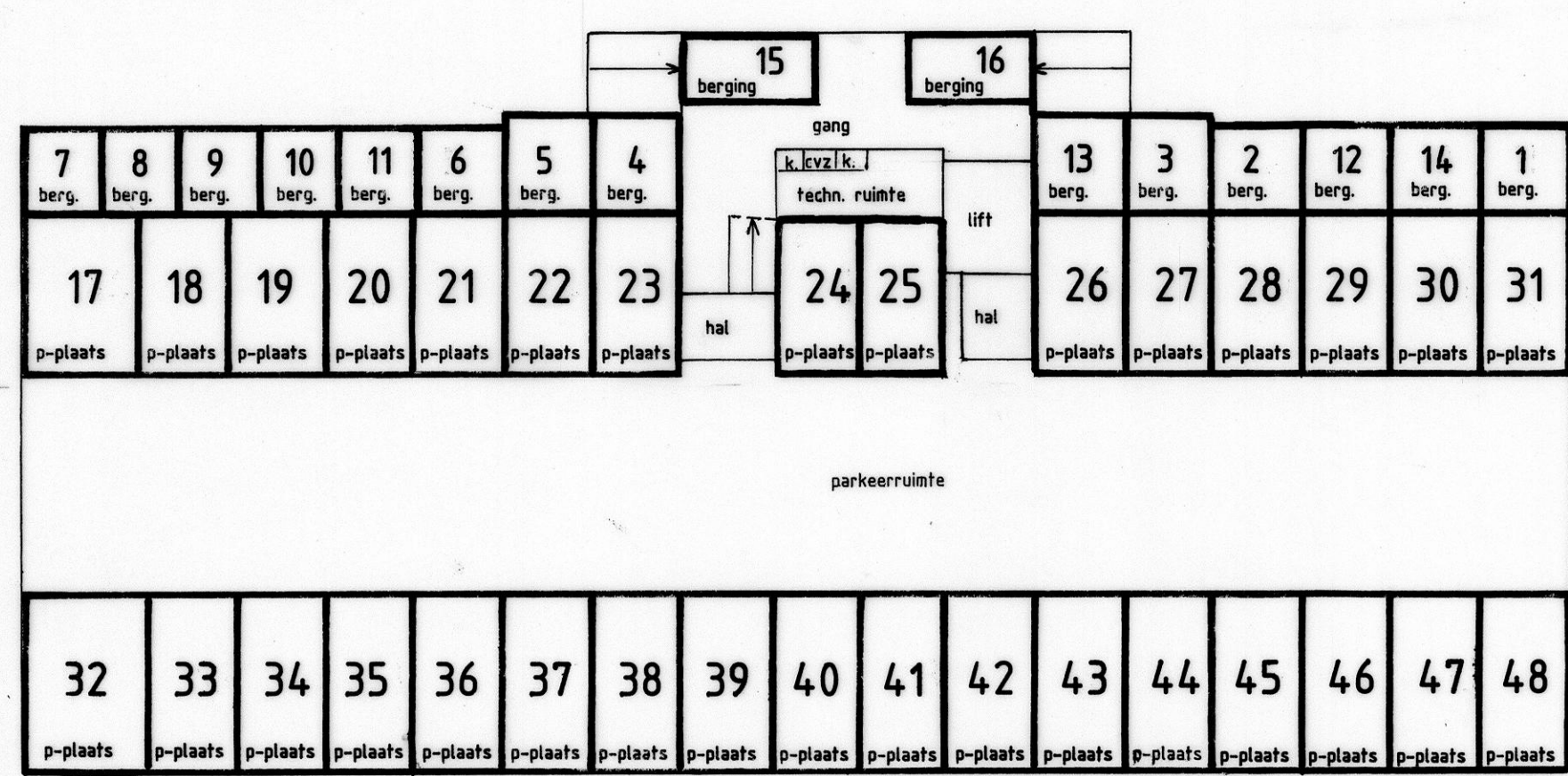
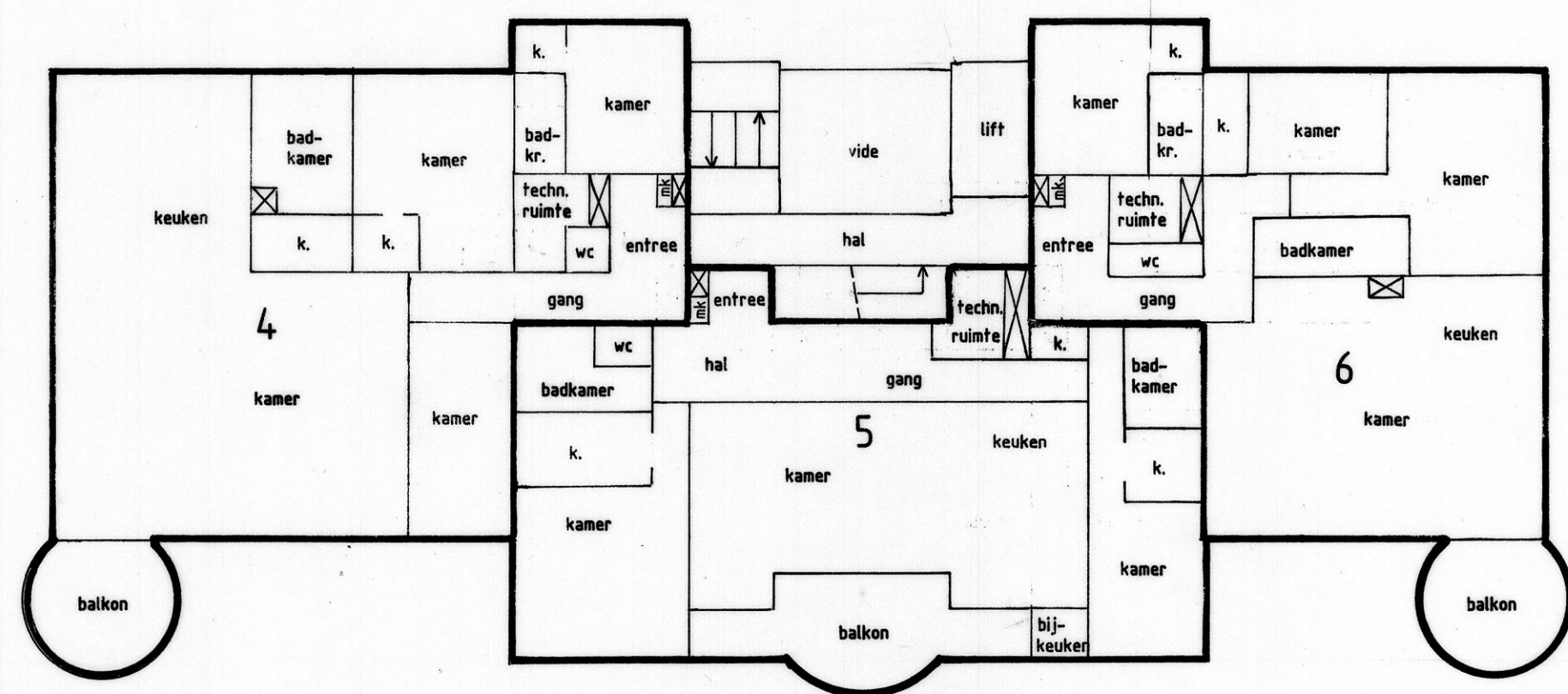


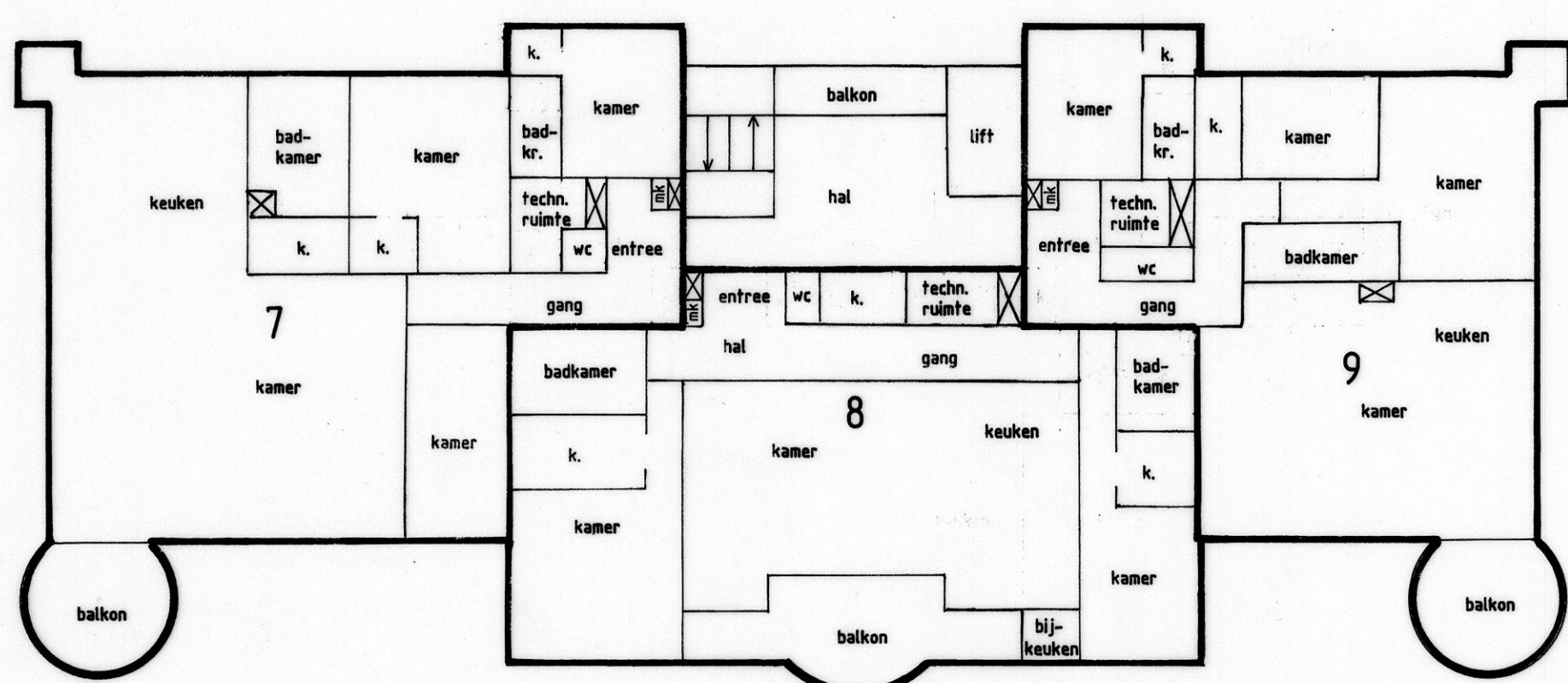
1e WOONLAAG 1 : 200



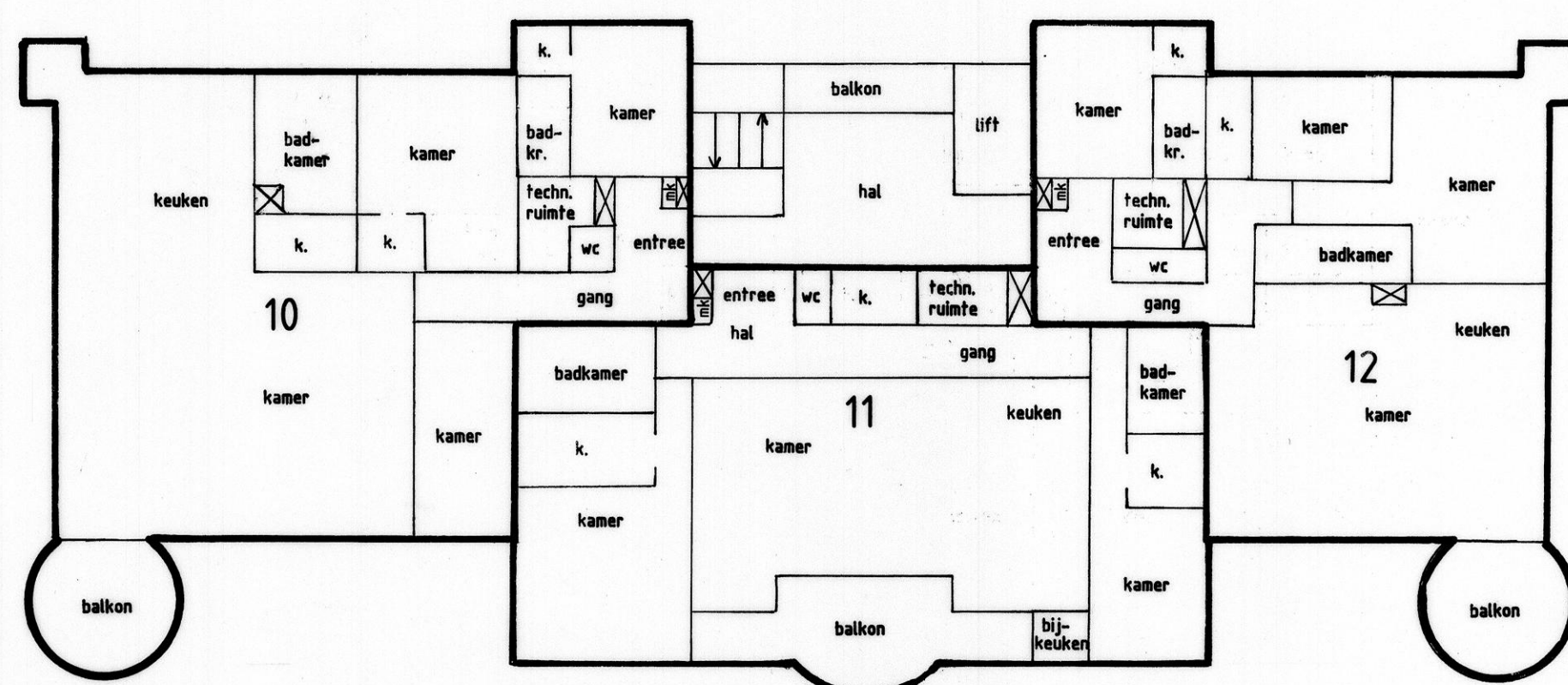
PARKEERLAAG 1 : 200



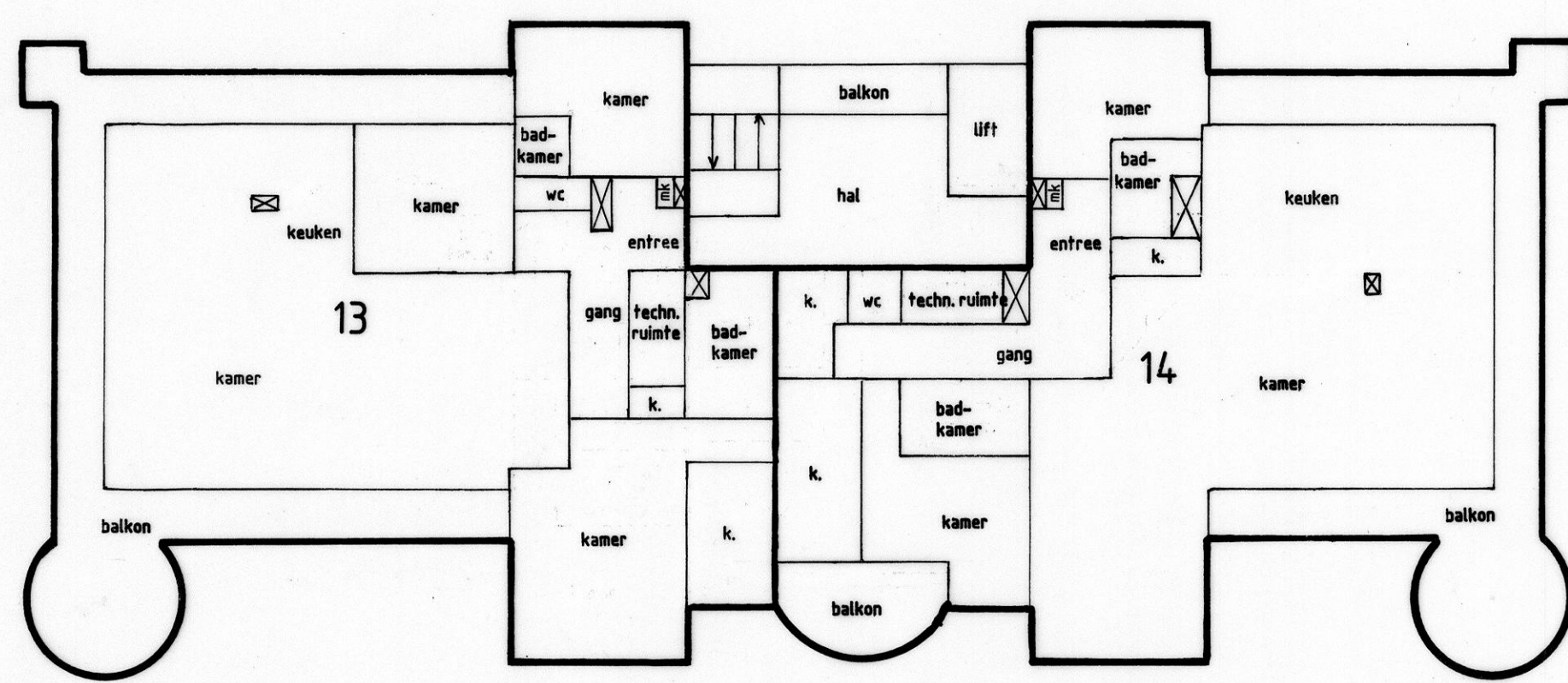
2e WOONLAAG 1 : 200



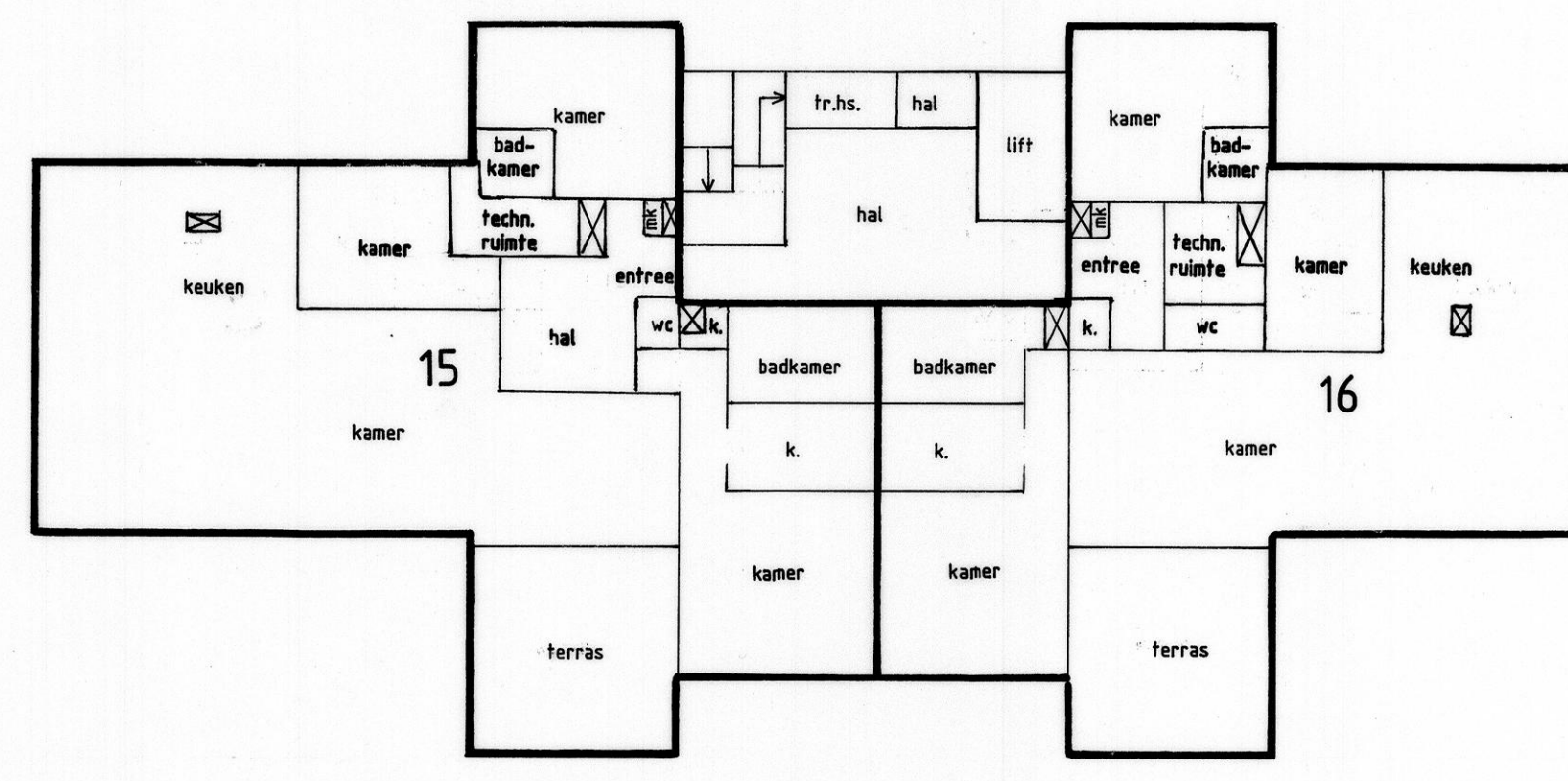
3e WOONLAAG 1 : 200



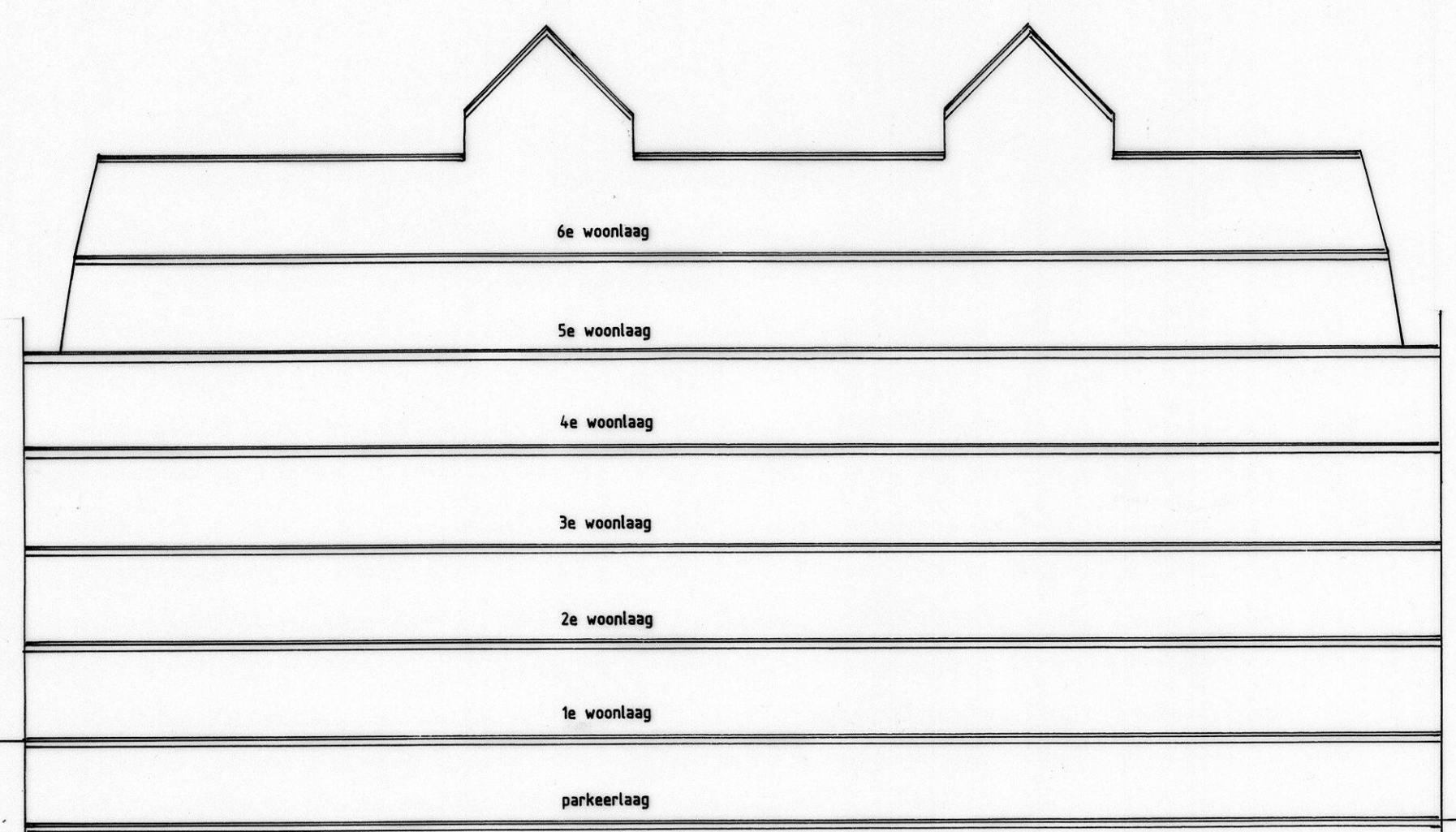
4e WOONLAAG 1 : 200



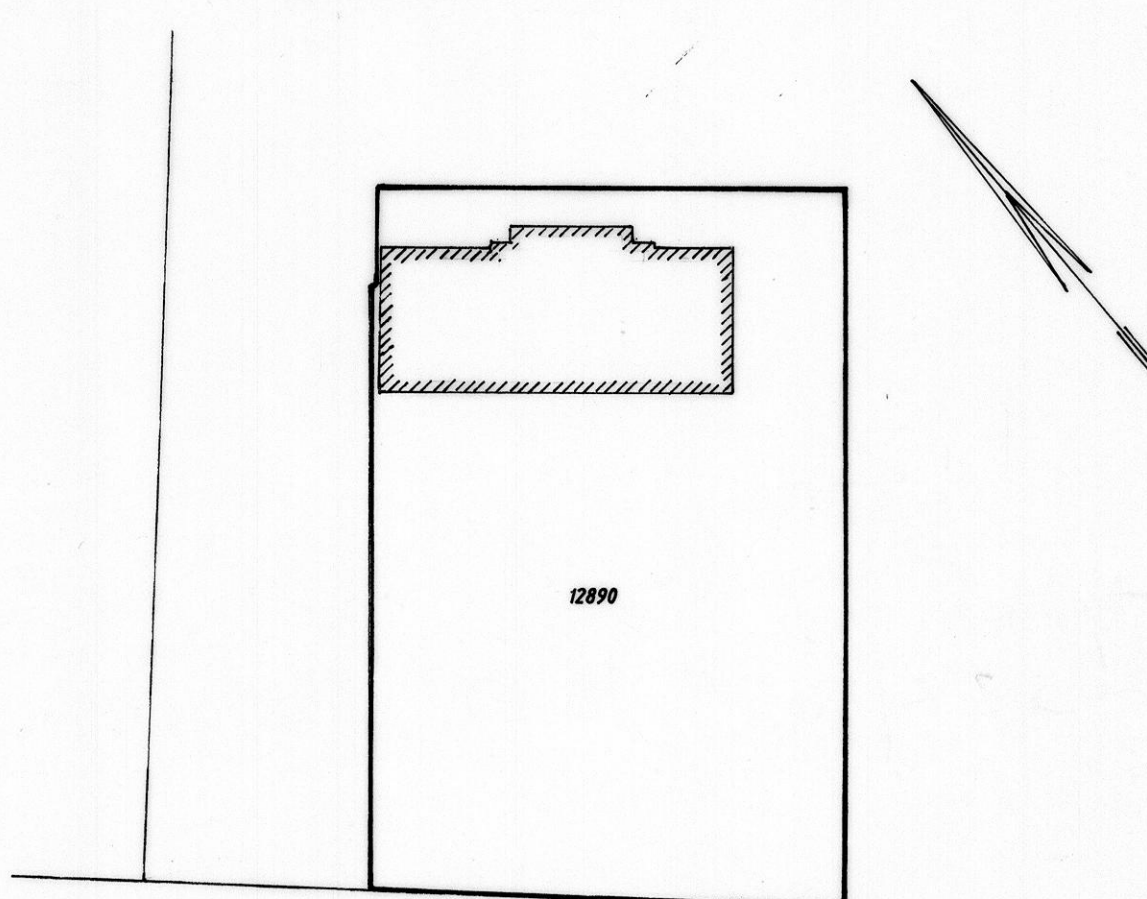
5e WOONLAAG 1 : 200



6e WOONLAAG 1 : 200



DOORSNEDE 1 : 200



SITUATIE 1 : 1000

"Het Kasteel"
nabij Duipepad/Spielingweg
Zwaanshoek-Boselanden

VOorgenomen SPLITTING IN APPARTEMENTSRECHTEN
VAN HET KADASTRALE PERCEEL

gemeente HAARLEMMEER
sectie AD
nummer 12890

d.d.

de notaris,

1 2 3 4 5 6 7 8 9 10 cm